

IC Lights C/W1 Double

Designed by Michael Anastassiades, 2020



Halogen - 2 x 60W - CRI> 95

Wall-ceiling lamp providing diffused light. Frame in brass, brushed and transparent varnished or chrome steel. Blown glass opal diffuser.

Are you a professional and your project needs consulting and support?

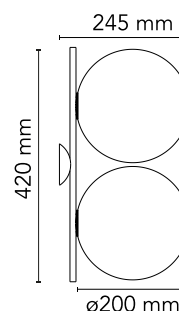
BOOK AN APPOINTMENT

Main specifications

EAN	8059607000069
Mounting	Ceiling, Wall
Environments	Indoor dry location
Light source type	Bulb
Light sources included	No
Lamp category	Halogen
Lamp holders	E14
Iicos	HSGS
Number of lamps	2
Power (W)	60

Physical

Colour	Brass
Length (mm)	245
Net weight (kg)	2.3
Package volume (m3)	0.06
IP internal	20



Download

Mounting instructions [Download PDF](#)

Photometric Files

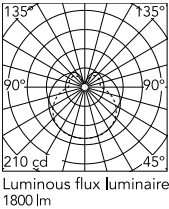
LDT / IES [Download LDT](#)

Technical Drawings

[Bim](#) [Download ZIP](#)



Schematic light drawing



Photometric

Lighting type	Total
Light distribution	Symmetric
CRI>	95
Extreme cut off	No

Electrical

Insulation class	I
Frequency (Hz)	50/60
Main voltage (Vac)	220-250
Dimmable	Yes
Dimming interface	Remote Dimmable (Dimmer Not Included)
Batteries inside	No

Bulbs



NOT INCLUDED

RF32290

LED Lamp E14 8W 2700K T28

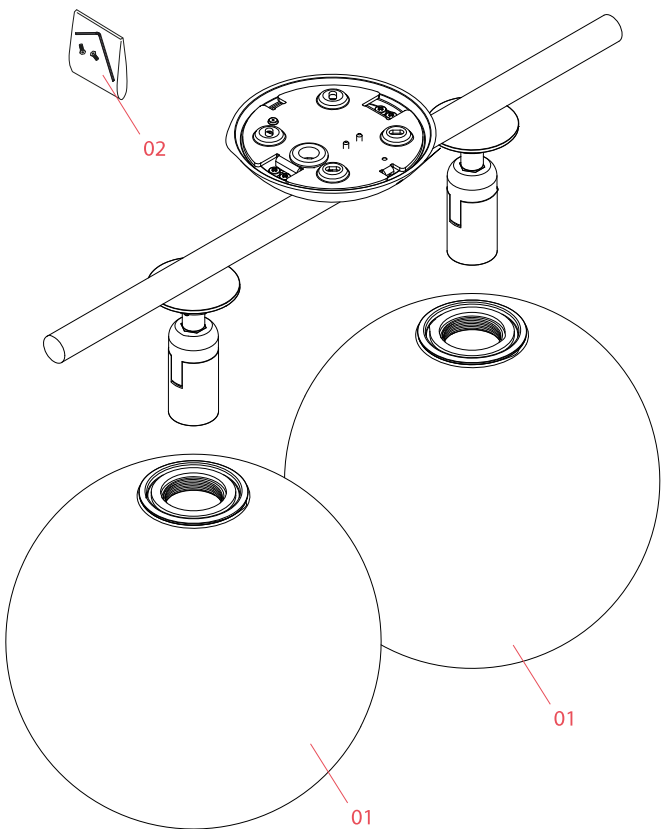


NOT INCLUDED

RF32291

LED Lamp E14 8W 3000K T28

Spare Parts



- | | | |
|-----|--|-----------|
| 01. | IC Lights 1 diffuser for brass version | F3136059 |
| 02. | Kit with screws and allen key | RF3160100 |



F3136059

IC Lights 1 diffuser for brass
version



RF3160100

Kit with screws and allen key